

A New Era In Smartphone Innovation

Huawei's first mobile AI computing platform



Open & Inclusive Ecosystem

Huawei's strategy is to work with developers to nurture a healthy and robust mobile AI ecosystem to create a new range of AI experiences



Dedicated Neural Network Processing Unit (NPU)

New HiAI mobile computing architecture with a dedicated NPU, delivering AI Performance which far surpasses any CPU/GPU build. 25x the performance with 50x greater efficiency.* In short: performs same AI quicker and with less power consumption (*Compared to a quad-core Cortex-A73 CPU cluster)



True Understanding

Devices powered by the Kirin 970 will be able to truly know and understand their users, while supporting real-time image recognition; intelligent photography and voice interaction with ease



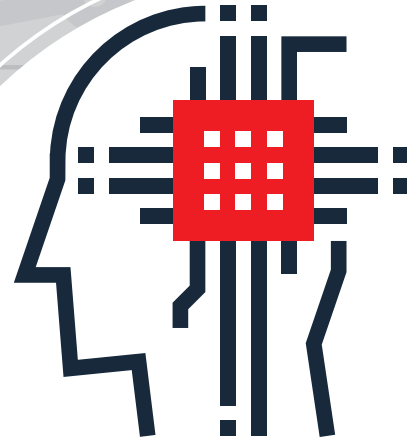
Battery Life

50% improvement in energy efficiency means a much longer battery life



Fast By Design

The Kirin 970 breaks through existing bottlenecks in mobile hardware, effectively redefining the collaborative relationship between devices and the cloud



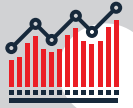
Kirin 970



The Perfect Complement

Peak Performance

Built with the most advanced TSMC10nm process to give the best performance yet



Tiny Transistors

5.5 billion transistors in a single square centimeter



Packs A Punch

In an area roughly the size of your thumbnail, the Kirin 970 combines an octa-core CPU, a 12-core GPU, dual ISP, a high-speed 1.2Gbps Cat.18 modem, and an innovative HiAI mobile computing architecture



Speedy Download

Able to reach peak download rates of 1.2Gbps



Ultimate Gaming Experience

Graphics processing performance is 20% better than the previous generation



Put to the test

In a benchmark image recognition test, the Kirin 970 processed 2,000 images per minute, which was faster than other chips on the market

